



Tyrosinase

Catalog # 10170.05 or .10 (0.5 ml or 1.0 ml concentrated)

Catalog # 10170.50 (5 ml ready to use)

INTENDED USE

- **In Vitro:** This product is intended for qualitative immunohistochemistry with normal and neoplastic, formalin-fixed, paraffin embedded tissue sections, to be viewed by light microscopy. This antibody was tested both with manual application and the most popular automated immunostainers.
- **Description:** This antibody recognizes a cluster of proteins between 70-80kDa, identified as tyrosinase. Tyrosinase is a copper-containing metallo-glycoprotein that catalyzes several steps in the melanin pigment biosynthetic pathway; the hydroxylation of tyrosine to L-3,4-dihydroxy-phenylalanine (dopa), and the subsequent oxidation of dopa to dopaquinone. Mutations of the gene occur in various forms of albinism. It is one of the targets for cytotoxic T-cell recognition in melanoma patients. Staining of melanomas with this antibody shows tyrosinase in melanotic as well as amelanotic variants. This anti-Tyrosinase is a useful marker for melanocytes and melanomas.
- **Expected Staining Pattern:** Cytoplasmic
- **Positive Control:** Melanoma

MATERIALS PROVIDED

- **Tyrosinase specific mouse monoclonal antibody:** #10170, tissue culture supernatant, concentrated, with 0.09% sodium azide.
- **Host:** Mouse
- **Epitope:** Not determined.
- **Species Reactivity:** Human.
- **Clone:** T311
- **Ig Isotype / Light Chain:** IgG2a / Kappa
- **Immunogen:** Recombinant tyrosinase protein
- **Sterility:** This product is not sterile.

MATERIALS REQUIRED, BUT NOT PROVIDED

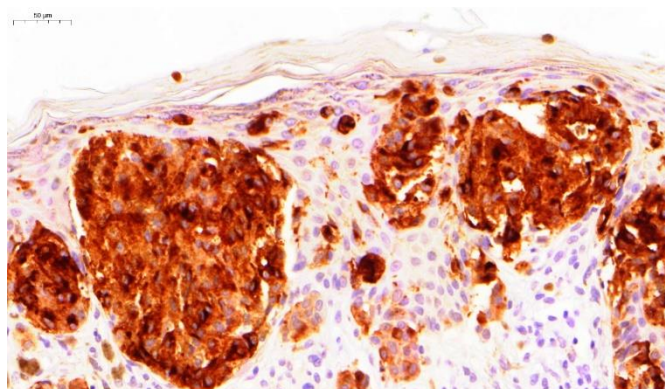
- Detection system
- Chromogen/substrate system

METHODS AND PROCEDURES

- **Tissue Section Pretreatment:** Staining of formalin-fixed tissue sections requires treating in boiling 10mM citrate buffer, pH 6.0 for 10-20 minutes.
- **Recommended Pretreatment:**
HISTOLS®-Citrate Buffer (cat#30010)
HISTOLS®-Peroxidase Blocking Solution (cat# 30013)
HISTOLS®-BBPS (Background Blocking Protein Solution) (cat# 30012)
- **Dilution of Concentrated Antibody:** 1:200 in antibody diluent (for informational purposes only), exact dilution must be determined by user.
- **Primary Antibody Incubation Time:** 60 minutes at RT.
- **Recommended Detection System:** HISTOLS®-MR (anti- mouse & rabbit Ig) (cat# 30011)
- **Visualization:** To detect antibody binding sites, follow the instructions provided with the chromogen/substrate system.

STORAGE AND STABILITY

This product contains sodium azide and is stable when stored at 2-8°C. Do not use after expiration date indicated on label of the product. If reagent is not stored as recommended, performance must be validated by the user.



Tyrosinase, melanoma

For Research Use Only

