



Epithelial Membrane Antigen (EMA)

Catalog # 10152.05 or .10 (0.5 ml or 1.0 ml concentrated)

Catalog # 10152.50 (5 ml ready to use)

INTENDED USE

- **In Vitro:** This product is intended for qualitative immunohistochemistry with normal and neoplastic, formalin-fixed, paraffin embedded tissue sections, to be viewed by light microscopy. This antibody was tested both with manual application and the most popular automated immunostainers.
- **Description:** Anti-EMA stains normal and neoplastic cells from various tissues, including mammary epithelium, sweat glands and squamous epithelium. Hepatocellular carcinoma, adrenal carcinoma and embryonal carcinomas are EMA negative, so keratin positivity with negative EMA favors one of these tumors. EMA is frequently positive in meningioma, which can be useful when distinguishing it from other intracranial neoplasms, e.g. Schwannomas. The absence of EMA can also be of value since it is characteristic of some adrenal carcinomas, seminomas, paraganglioma and hepatoma.
- **Expected Staining Pattern:** Cell membrane, cytoplasmic
- **Positive Control:** Breast or colon cancer

MATERIALS PROVIDED

- **EMA specific mouse monoclonal antibody:** #10152, tissue culture supernatant, concentrated, with 0.09% sodium azide.
- **Host:** Mouse
- **Epitope:** Not determined.
- **Species Reactivity:** Human.
- **Clone:** E29
- **Ig Isotype / Light Chain:** IgG2a / Kappa
- **Immunogen:** Delipidated extract of human milk fat globule membranes
- **Sterility:** This product is not sterile.

MATERIALS REQUIRED, BUT NOT PROVIDED

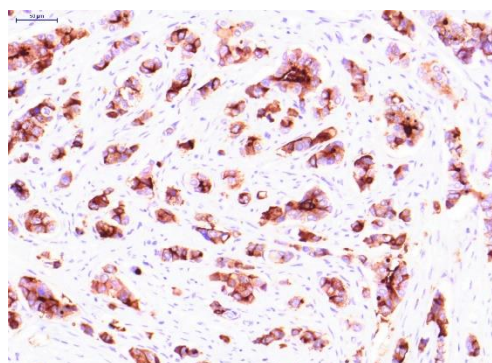
- Detection system
- Chromogen/substrate system

METHODS AND PROCEDURES

- **Tissue Section Pretreatment:** Staining of formalin-fixed tissue sections requires treating in boiling 10mM citrate buffer, pH 6.0 for 10-20 minutes.
- **Recommended Pretreatment:** HISTOLS®-Citrate Buffer (cat#30010) HISTOLS®-Peroxidase Blocking Solution (cat# 30013) HISTOLS®-BBPS (Background Blocking Protein Solution) (cat# 30012)
- **Dilution of Concentrated Antibody:** 1:200 in antibody diluent (for informational purposes only), exact dilution must be determined by user.
- **Primary Antibody Incubation Time:** 60 minutes at RT.
- **Recommended Detection System:** HISTOLS®-MR (anti- mouse & rabbit Ig) (cat# 30011)
- **Recommended Chromogen / Substrate System:** HISTOLS®-Resistant AEC (cat#30015.K)
- **Visualization:** To detect antibody binding sites, follow the instructions provided with the chromogen/substrate system.

STORAGE AND STABILITY

This product contains sodium azide and is stable when stored at 2-8°C. Do not use after expiration date indicated on label of the product. If reagent is not stored as recommended, performance must be validated by the user.



EMA, breast cancer
For Research Use Only

