



Wilm's Tumor Protein (WT1)

Catalog # 10048.05 or .10 (0.5 ml or 1.0 ml concentrated)

Catalog # 10048.50 (5 ml ready to use)

INTENDED USE

- **In Vitro:** This product is intended for qualitative immunohistochemistry on normal and neoplastic, formalin-fixed, paraffin-embedded tissue sections, to be analyzed by light microscopy. This antibody was tested both with manual application and the most popular automated immunostainers.
- **Description:** The gene encoding Wilm's Tumor Protein is a suppressor gene located on chromosome 11p13. WT1 has been identified in proliferative mesothelial cells, malignant mesothelioma, ovarian cystadeno-carcinoma, gonadoblastoma, nephro-blastoma and desmoplastic small round cell tumor. The WT1 gene is normally expressed in fetal kidney and mesothelium, and its expression has been suggested as a marker for Wilm's tumor and mesothelioma. Lung adenocarcinoma is rarely positive with this antibody.
- **Expected Staining Pattern:** Nuclear
- **Positive Control:** Kidney, mesothelioma

MATERIALS PROVIDED

- **WT1 specific mouse monoclonal antibody** #10048: purified tissue culture supernatant, with 0.09% sodium azide.
- **Antibody Concentration:** Not known
- **Host:** Mouse
- **Epitope:** Not determined
- **Species Reactivity:** Human
- **Clone:** 6F-H2
- **Ig Isotype:** IgG1 / Kappa
- **Immunogen:** Recombinant protein corresponding to residues 1-181 of human WT1.
- **Sterility:** This product is not sterile.

MATERIALS REQUIRED, BUT NOT PROVIDED

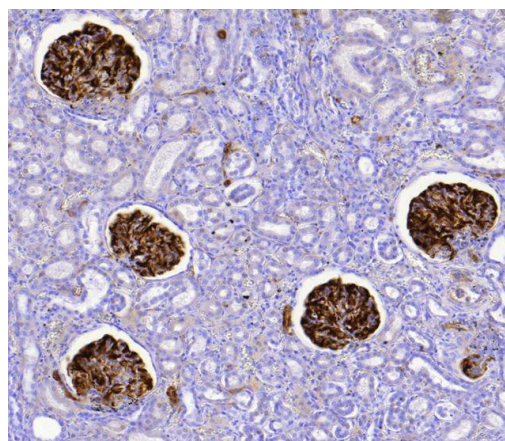
- Detection system
- Chromogen/substrate system

METHODS AND PROCEDURES

- **Tissue Section Pretreatment:** Staining of formalin-fixed tissue sections requires treating in boiling 10mM citrate buffer, pH 6.0 for 10-20 minutes.
- **Recommended Pretreatment:** HISTOLS®-Citrate Buffer (cat#30010) HISTOLS®-Peroxidase Blocking Solution (cat# 30013) HISTOLS®-BBPS (Background Blocking Protein Solution) (cat# 30012)
- **Dilution of Antibody:** 1:50 – 1:100 in antibody diluent (for informational purposes only), exact dilution must be determined by user.
- **Primary Antibody Incubation Time:** 60 minutes at RT.
- **Recommended Detection System:** HISTOLS®-MR (anti- mouse & rabbit Ig) (cat# 30011)
- **Visualization:** To detect antibody binding sites, follow the instructions provided with the chromogen/substrate system.

STORAGE AND STABILITY

This product contains sodium azide and is stable when stored at 2-8°C. Do not use after expiration date indicated on label of the product. If reagent is not stored as recommended, performance must be validated by the user.



WT1, kidney
For Research Use Only

