

CD8

Catalog # 10173.05 or .10 (0.5 ml or 1.0 ml concentrated)

Catalog # 10173.50 (5 ml ready to use)

INTENDED USE

- **In Vitro:** This product is intended for qualitative immunohistochemistry with normal and neoplastic, formalin-fixed, paraffin embedded tissue sections, to be viewed by light microscopy. This antibody was tested both with manual application and the most popular automated immunostainers.
- **Description:** A majority of thymocytes and a subpopulation of mature T cells and NK cells express CD8a. For mature T-cells, CD4 and CD8 are mutually exclusive, so anti-CD8, generally used in conjunction with anti-CD4. It is a useful marker for distinguishing helper/inducer T-lymphocytes, and most peripheral T-cell lymphomas are CD4+/CD8-. Anaplastic large cell lymphoma is usually CD4+ and CD8-, and in T-lymphoblastic lymphoma/leukemia, CD4 and CD8 are often co-expressed. CD8 is also found in littoral cell angioma of the spleen.
- **Expected Staining Pattern:** Cell membrane
- **Positive Control:** Tonsil

MATERIALS PROVIDED

- **CD8 specific mouse monoclonal antibody:** #10173, tissue culture supernatant, concentrated, with 0.09% sodium azide.
- **Host:** Mouse
- **Epitope:** Not determined.
- **Species Reactivity:** Human.
- **Clone:** 144B
- **Ig Isotype / Light Chain:** IgG1 / Kappa
- **Immunogen:** A 13 amino acid synthetic peptide from the C-terminal cytoplasmic domain of human CD8 molecule
- **Sterility:** This product is not sterile.

MATERIALS REQUIRED, BUT NOT PROVIDED

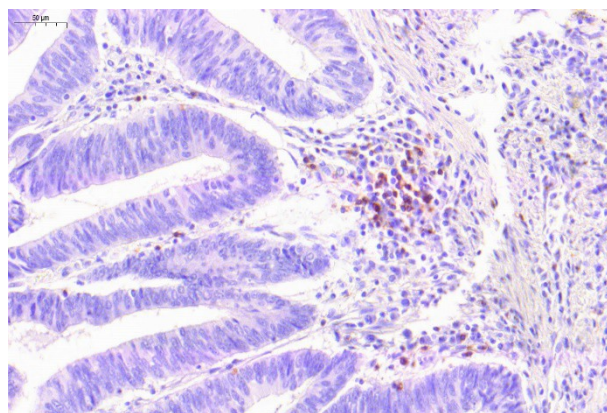
- Detection system
- Chromogen/substrate system

METHODS AND PROCEDURES

- **Tissue Section Pretreatment:** Staining of formalin-fixed tissue sections requires treating in boiling 10mM citrate buffer, pH 6.0 for 10-20 minutes.
- **Recommended Pretreatment:** HISTOLS®-Citrate Buffer (cat#30010) HISTOLS®-Peroxidase Blocking Solution (cat# 30013) HISTOLS®-BBPS (Background Blocking Protein Solution) (cat# 30012)
- **Dilution of Concentrated Antibody:** 1:100 – 1:200 in antibody diluent (for informational purposes only), exact dilution must be determined by user.
- **Primary Antibody Incubation Time:** 60 minutes at RT.
- **Recommended Detection System:** HISTOLS®-MR (anti- mouse & rabbit Ig) (cat# 30011)
- **Visualization:** To detect antibody binding sites, follow the instructions provided with the chromogen/substrate system.

STORAGE AND STABILITY

This product contains sodium azide and is stable when stored at 2-8°C. Do not use after expiration date indicated on label of the product. If reagent is not stored as recommended, performance must be validated by the user.



CD8, colon
For research use only