



## C3d complement

Catalog # 10095.05 or .10 (0.5 ml or 1.0 ml concentrated)

Catalog # 10095.50 (5.0 ml ready to use)

### INTENDED USE

- **In Vitro:** This product is intended for qualitative immunohistochemistry on normal and neoplastic, formalin-fixed, paraffin embedded tissue sections, to be analyzed by light microscopy. This antibody was tested both with manual application and the most popular automated immunostainers.
- **Description:** C3d is involved in the regulation of many aspects of the immune response including antigen processing and presentation. The C3d/antigen complex mediates B cell activation.
- **Expected Staining Pattern:** Cell membrane, cytoplasm.
- **Positive Control:** Pemphigus vulgaris

### MATERIALS PROVIDED

- **C3d specific rabbit clonal antibody** #10095, concentrated, in TBS buffer pH 8.0, 20mM, contains 20 mg/ml BSA and 0.05% sodium azide.
- **Antibody Concentration:** Not known
- **Host:** Rabbit
- **Epitope:** Not determined
- **Species Reactivity:** Human. Others not tested.
- **Clone:** E28-P
- **Immunogen:** Peptide derived from N-terminal sequence of human C3
- **Sterility:** This product is not sterile.

### MATERIALS REQUIRED, BUT NOT PROVIDED

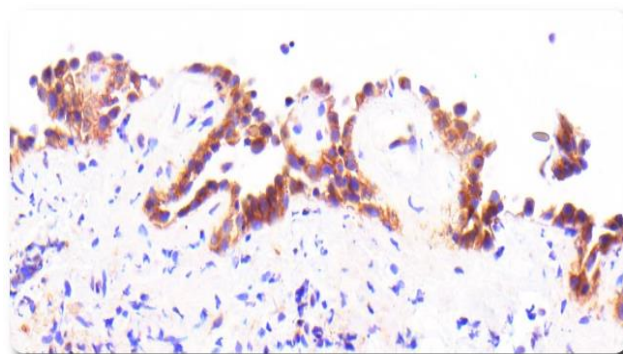
- Detection system
- Chromogen/substrate system

### METHODS AND PROCEDURES

- **Tissue Section Pretreatment:** Staining of formalin-fixed tissue sections requires treating in boiling 10mM citrate buffer, pH 6.0 for 10-20 minutes.
- **Recommended Pretreatment:** HISTOLS<sup>®</sup>-Citrate Buffer (cat#30010) HISTOLS<sup>®</sup>-Peroxidase Blocking Solution (cat# 30013) HISTOLS<sup>®</sup>-BBPS (Background Blocking Protein Solution) (cat# 30012)
- **Dilution of Concentrated Antibody:** 1:100-1:200 in antibody diluent (for informational purposes only), exact dilution must be determined by user.
- **Primary Antibody Incubation Time:** 60 minutes at RT.
- **Recommended Detection System:** HISTOLS<sup>®</sup>-MR (anti- mouse & rabbit Ig) (cat# 30011)
- **Visualization:** To detect antibody binding sites, follow the instructions provided with the chromogen/substrate system.

### STORAGE AND STABILITY

This product contains sodium azide and is stable when stored at 2-8°C. Do not use after expiration date indicated on label of the product. If reagent is not stored as recommended, performance must be validated by the user.



C3d complement, pemphigus vulgaris

**For Research Use Only**

